

# MONTHLY MEMBERSHIP PROGRESS REPORT

LOCATION WISCONSIN

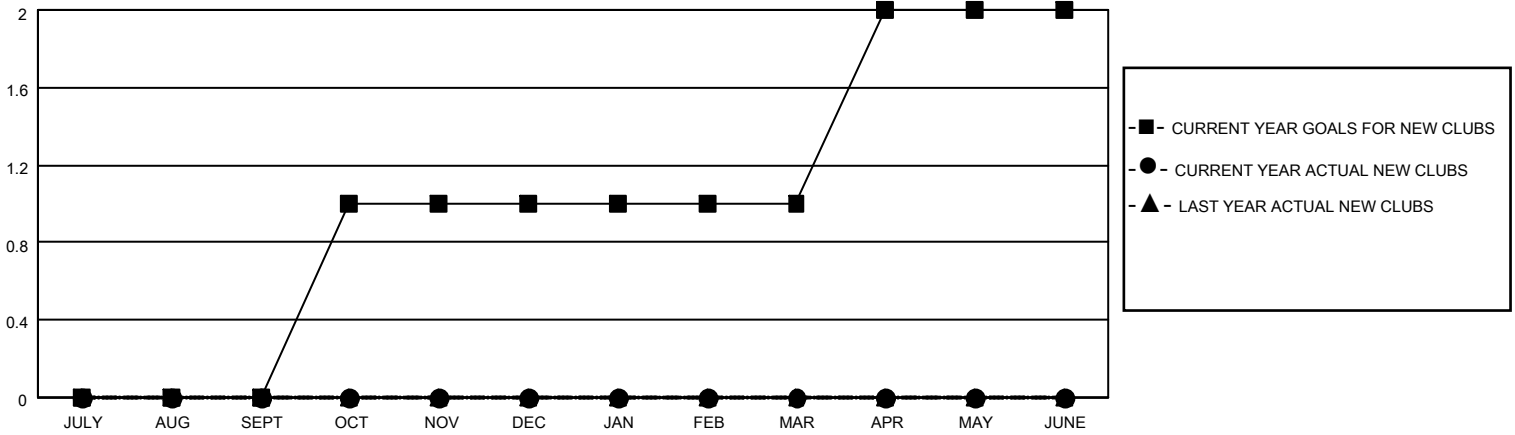
District 27 B1

Results as of: 1/31/2022

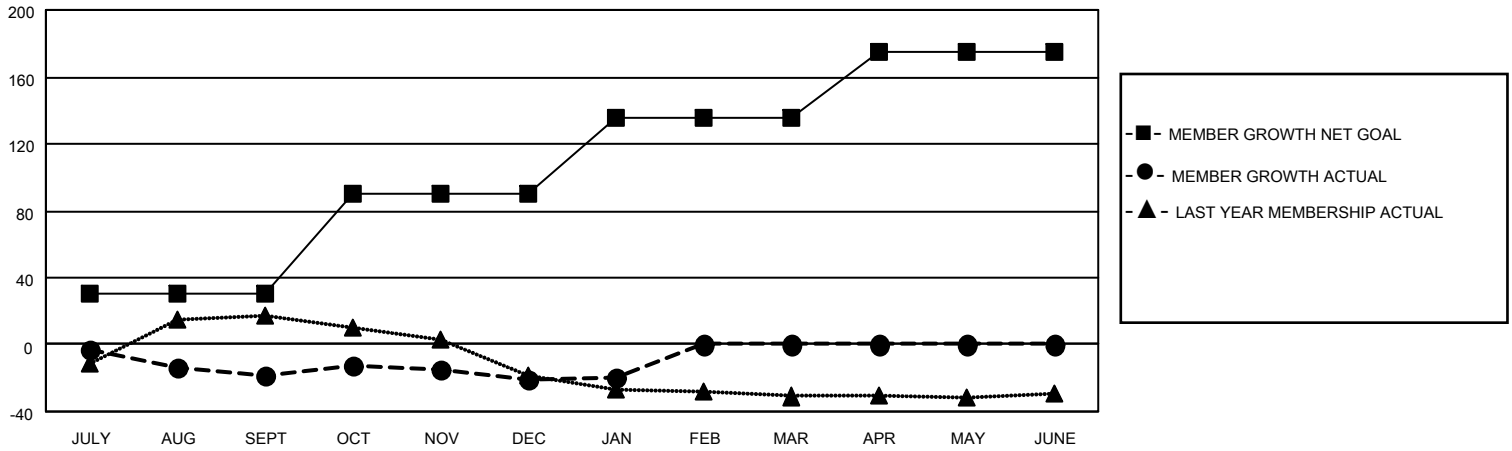
Clubs			
RESULTS FOR 2021-2022			
QUARTER	NEW CLUB GOAL	NEW CLUBS	DROPPED CLUBS
JULY/AUG/SEPT	0	0	0
OCT/NOV/DEC	1	0	0
JAN/FEB/MAR	0	0	0
APR/MAY/JUNE	1	0	0

Members			
RESULTS FOR 2021-2022			
QUARTER	MEMBER GROWTH NET GOAL	MEMBER GROWTH ACTUAL	DROPPED MEMBERS ACTUAL (including transfers)
JULY/AUG/SEPT	30	40	47
OCT/NOV/DEC	60	38	36
JAN/FEB/MAR	45	22	21
APR/MAY/JUNE	40	0	0

**GOALS AND ACTUAL NEW CLUBS CUMULATIVE**



**GOALS AND ACTUAL MEMBERS CUMULATIVE**



**DROPPED CLUBS: 0**

**31 CLUBS OF 63 ADDED 1 OR MORE NEW MEMBERS**

**GENDER DISTRIBUTION**

MALE	1,350 (73.53%)
FEMALE	486 (26.47%)
NON BINARY	0 (0.00%)
PREFER NOT TO ANSWER	0 (0.00%)

**DROPPED MEMBERS**

[CLICK HERE FOR CUMULATIVE MEMBERSHIP DATA](#)

DECEASED	21
CLUB CANCELLED	0
OTHER	83
<b>TOTAL</b>	<b>104</b>

TOTAL FAMILY UNIT MEMBERS 330

FAMILY MEMBERS PAYING HALF DUES 167